

Tenda



CP6

Security Pan / Tilt Camera 2K



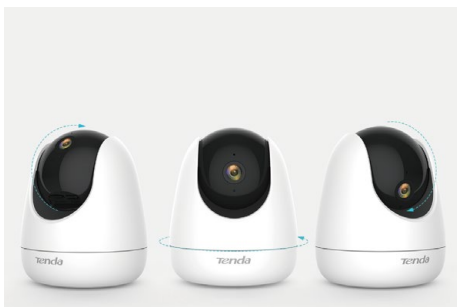
CP6

Security Pan / Tilt Camera 2K

Products Description

The security Pan/Tilt Camera-CP6, is a high-performed home surveillance Camera that integrates 360° visual coverage with 2K resolution. It is also fetured with full-duplex two-way audio, smart-motion detection/tracking, sound and light alarm functions. The product is mostly used for indoor scenarios monitoring such as homes, shops, offices and classrooms, etc. The users can access the video via wireless or wired connection to the router.

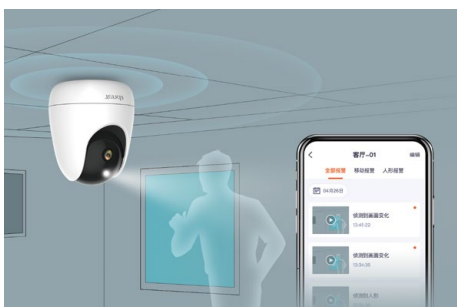
Selling Points



360° All-round Vision

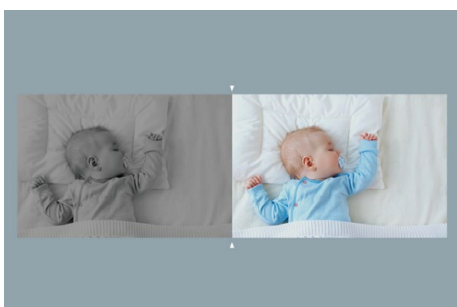
High speed pan/tilt design enables flexible rotation in all directions.

CP6 covers 360° horizontally and 155° vertically (90° up, 65° down) which leaves zero blind zones at all.



Sound and Light Alarm

When intrusion is detected during the alert period, a sound and flashing white light alarm will be triggered to warn illegal intruders. At the same time, the alarm message will be sent to your mobile.



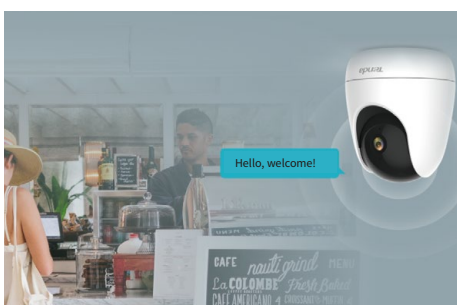
Infrared Night Vision

Equipped with high sensitive image sensors,CP6 shows the color of delicate image even in low-light condition. The four built-in 850 nm infrared lights are producing clearer night vision and increasing the distance of night vision up to 12 m(40ft) .



Auto Targeting and Tracking

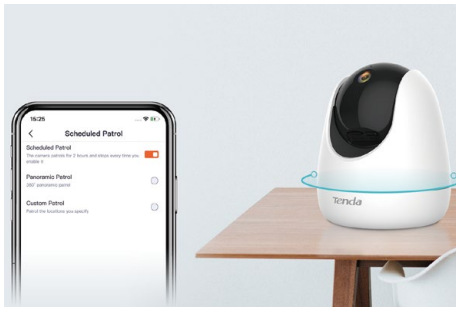
Based on the AI machine vision algorithms, the "Smart Tracking" can automatically track the movements and stores the video.



Customizable Voice Alerts

You can customize 3 personalized audio message for shop greeting or theft warning

Selling Points



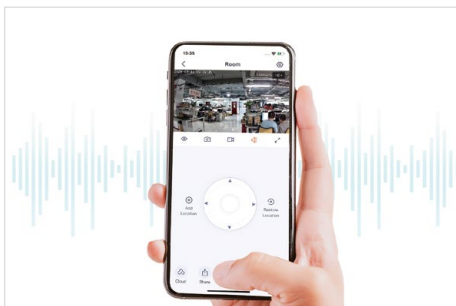
Patrol with one click

You can set the pan/tilt patrol locations through the TDSEE App, and the camera rotates cyclically according to the preset location to patrol the area.



MicroSD Card / Cloud Storage

The video can be stored in local Micro SD card and cloud storage. Even a vandal accident happens to your devices, you can still retrieve videos based on cloud recording.



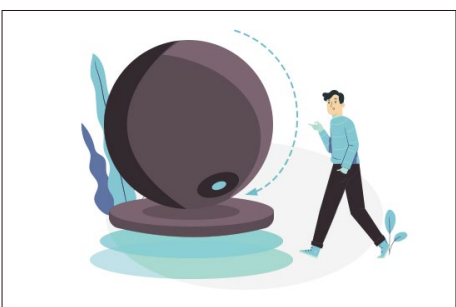
Two-way Audio

Real-time full-duplex two-way audio communication function enables you to chat with your family anytime and anywhere, bringing the most affectionate greetings to your beloved.



S-motion Detection

Based on AI deep learning algorithms, CP6 can detect human shape and other motion. It recognizes the movement accurately and captures suspicious status automatically, and the resulting alarms will deliver to your mobile in real time.



Privacy Shutter

The camera rotate downward when the master comes home by tapping on the APP.

Technical Specifications

Hardware Specifications	
Pan/Tilt	Horizontal rotation: 355°, vertical rotation: 155° (90° up, 65° down), support physical shutter lens
Lens	4mm@F2.2
Ports	Storage: Micro SD card (Up to 256G, Class10 and above storage card) Power: DC 9V=0.6A Ethernet: One RJ45, 10M/100M auto-negotiation Ethernet port
Button	Reset x 1
LED Indicator	Dual color (red & blue) LED indicator x 1
Antenna	Internal antenna
Product Size	103mm*88mm*88mm
Video Parameter	
Resolution	2304*1296
Day and Night Shift Mode	ICR infrared filter type
Noise Reduction	3D digital noise reduction
DWDR	Support
Backlight Compensation	Support
ROI	Support
Wireless Parameter	
Wireless Standard	IEEE 802.11b/g/n @2.4GHz
Wireless Rate	150Mbps
Security	64/128-bit WEP, WPA/WPA2, WPA-PSK/WPA2-PSK
Others	
Smart Alarm	S-motion detection&Human Shape detection
Alarm	Sound and light alarm
Audio	Full-duplex two-way audio
DIY Audio	Up to 3 personalized audio
Auto Patrol	6 preset patrol location

Infrared Night Vision Distance	12 Meters (40ft) (Depending on environment)
Temperature	Operating temperature: -10°C~ 50°C Storage temperature: -40°C~70°C
Humidity	Operating humidity: 10%-95%RH (non-condensing) Storage humidity: 3% ~ 95%RH (non-condensing)
Certification	CE, RoHs, FCC, RCM
Package Contents	Security Pan/Tilt Camera, Power adapter (cord length: 3m) , Wall-mounted accessory kit, Quick installation guide

SHENZHEN TENDA TECHNOLOGY CO.,LTD.

Tenda Technology Bldg.Int' IE-City,
#1001 Zhong Shan Yuan Rd.,Nanshan District,Shenzhen China.

E-mail:support@tenda.com.cn
Tel:+86-755-2765 7098
Fax:+86-755-2765 7178
PC:518055

